

# Familyhood

## Statewide Training

# Statewide Supports: Strengthening Families Through Strategic Services and Resources



**wellspring**

# Wellspring

Wellspring Weekend is for parents and caregivers — both couples and individuals — living in Oklahoma. We strive to inspire community support, personal growth, and hope.



# Who We Serve



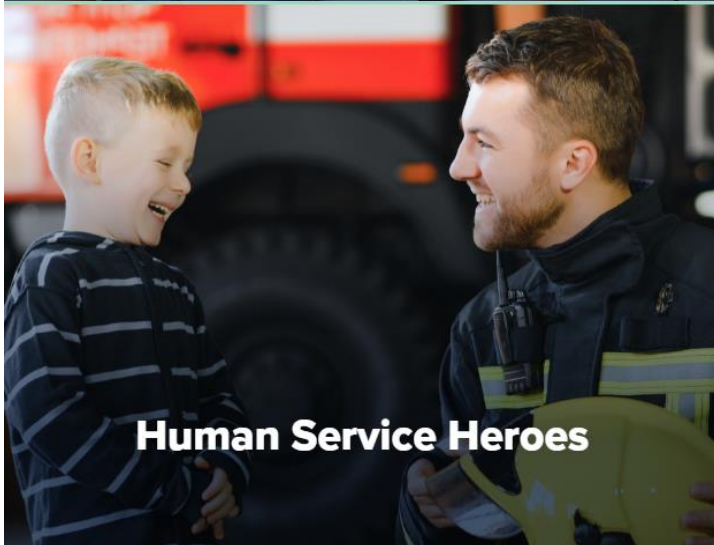
**Adoptive & Foster Parents**



**Grandfamilies, Relative Caregivers & Stepfamilies**



**Parents Caring for a Child With Special Needs or Autism**



**Human Service Heroes**



**Youth Education Ambassadors**



**Padres de Familia Que Hablan Español**



# The core of Wellspring is the knowledge and skills we teach to grow and strengthen family relationships



**Practice Three Keys to Success**



**Gain Skills for Strong Communication**



**Grow Your Knowledge Base and Benefit from Community Leaders**



**Discover Ways to Safeguard Hope**



**Connect and Share Social Support**



**Discover Future Possibilities**



# Renew & Connect

We offer hope, opportunities, and community connections to those who need it most.



## Meals & Hotel

Provided free of charge during the event



## Celebration of Growth

A memorable evening with a special dinner is provided to attendees



## Child-Free Time

Children do not attend, but a child-care stipend is offered to offset the cost of care.

# SCHEDULE

DAY

1

AM

- 8:00** **Breakfast in Pre-Function Area**
- 9:00** **Meet + Greet:** Connecting the Group
- 9:30** **Self-Assessment:** Taking Inventory of Connections
- 10:00** **Resource Connections:** Opportunities for Your Family
- 11:00** **Pick Your Path:** Breakout Sessions
- 11:45** **Break**

PM

- 12:00** **The Power of Hope**
- 12:45** **Lunch**
- 1:30** **Stronger Connections:** Unlock the Power Within
- 2:35** **You Matter:** What You Add to Your Family
- 3:30** **Break + Refresh**
- 6:00** **Photo Booth Ops**
- 6:30** **Celebration of Growth:** A Special Evening to Honor Your Wellspring Experience

DAY

2

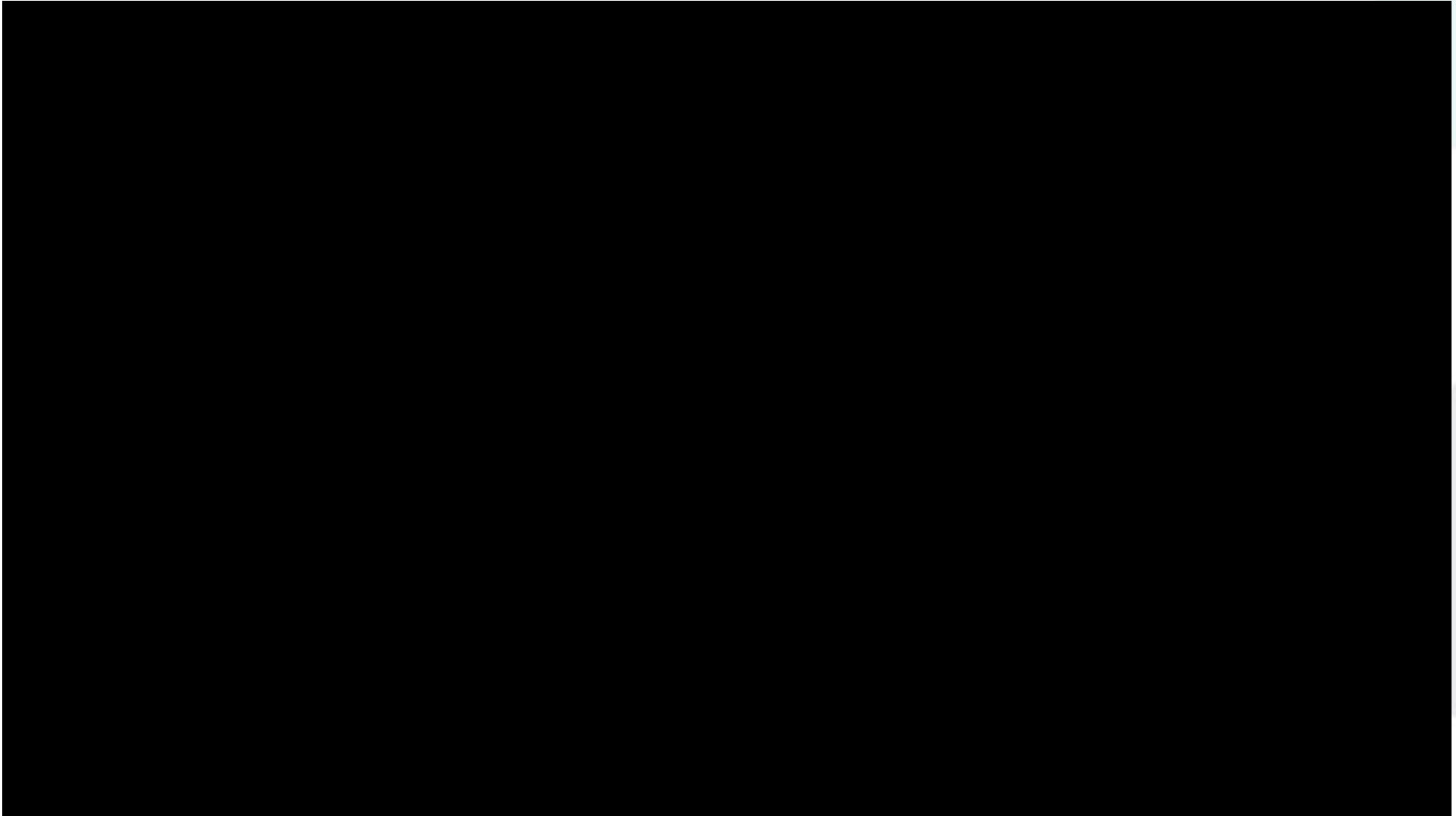
AM

- 8:00** **Breakfast in Hotel Restaurant** + Hotel Checkout
- 10:00** **Pick Your Path:**  
Couple Path: South Ballroom  
Independent Path: North Ballroom
- 10:30** **Safeguarding Hope:** Prioritize Connections
- 11:15** **Break**
- 11:25** **How to Be Heard:** Steps to Better Communication

PM

- 12:10** **Stress-Proofing:** New Tools to Tackle Old Habits
- 12:45** **Lunch**
- 1:30** **Real Talk:** Group Connections
- 2:45** **Break**
- 3:00** **Future Possibilities:** Creating Your Pathway of Hope
- 4:00** **Conclusion + Child Care Stipend Pickup**

# Connected by Hope





# Renew with Wellspring

FRIDAY  
NOV 1

—

SUNDAY  
NOV 3

OKC



**Focusing on Adoptive Parents**



# We Need You!

Become a resource partner, share with your network, and connect with us.



**Want to attend or partner with us?**



# Thank you!

[wellspringweekend.com](http://wellspringweekend.com)

844.944.9301

[wellspring@publicstrategies.com](mailto:wellspring@publicstrategies.com)



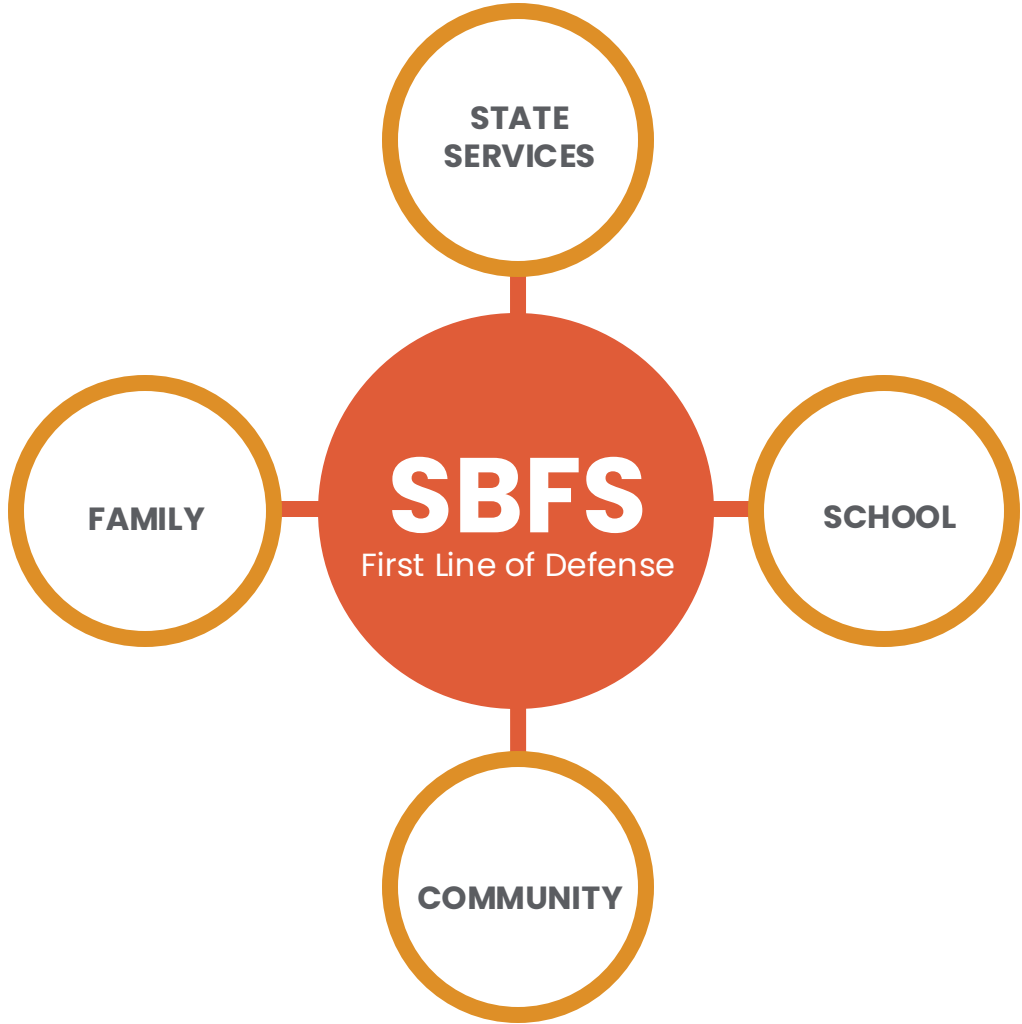
# **School-Based Family Services Program**

Satoya Williams  
School-Based Partnerships





# Supporting Families Through Early Intervention





# Our purpose



- 1. PREVENTATIVE SERVICES**
- 2. FIRST LINE OF DEFENSE**
- 3. OVERCOME BARRIERS**
- 4. POSITIVE COLLABORATION**
- 5. COMMUNICATE & SUPPORT**
- 6. IMPROVE OUTCOMES**
- 7. COMMUNITY WELL-BEING**
- 8. REDUCE RISK FACTORS**
- 9. PROVIDE RESOURCES**

# School-Based Family Services: Two Models

## School-Based Specialists (SBS) Model

- OKDHS employee
- Salary is split **50%-50%** between OKDHS and the school district
- Provides **resources and support** to families
- Staff is monitored and supported by **OKDHS staff in collaboration with the school administrator**

## School-Based Family Specialists (SBFS) Expansion Model

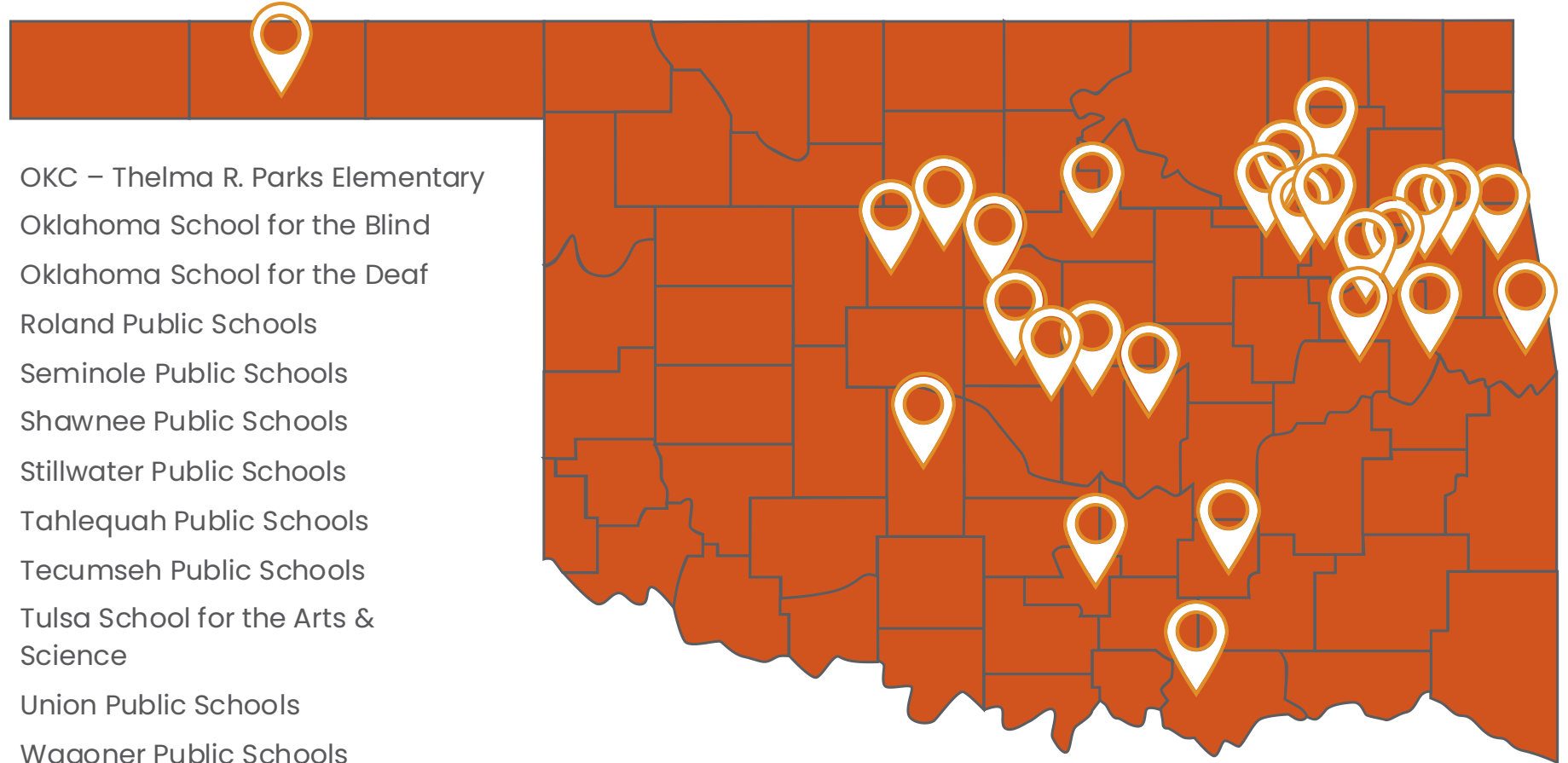
- **School district employee hired by school administrator**
- Salary is split **80%-20%** between OKDHS and the school district with OKDHS covering the majority
- Provides **resources and support to families**
- Staff is monitored and supported by the **school administrator in collaboration with OKDHS staff**

# SBS program growth & success

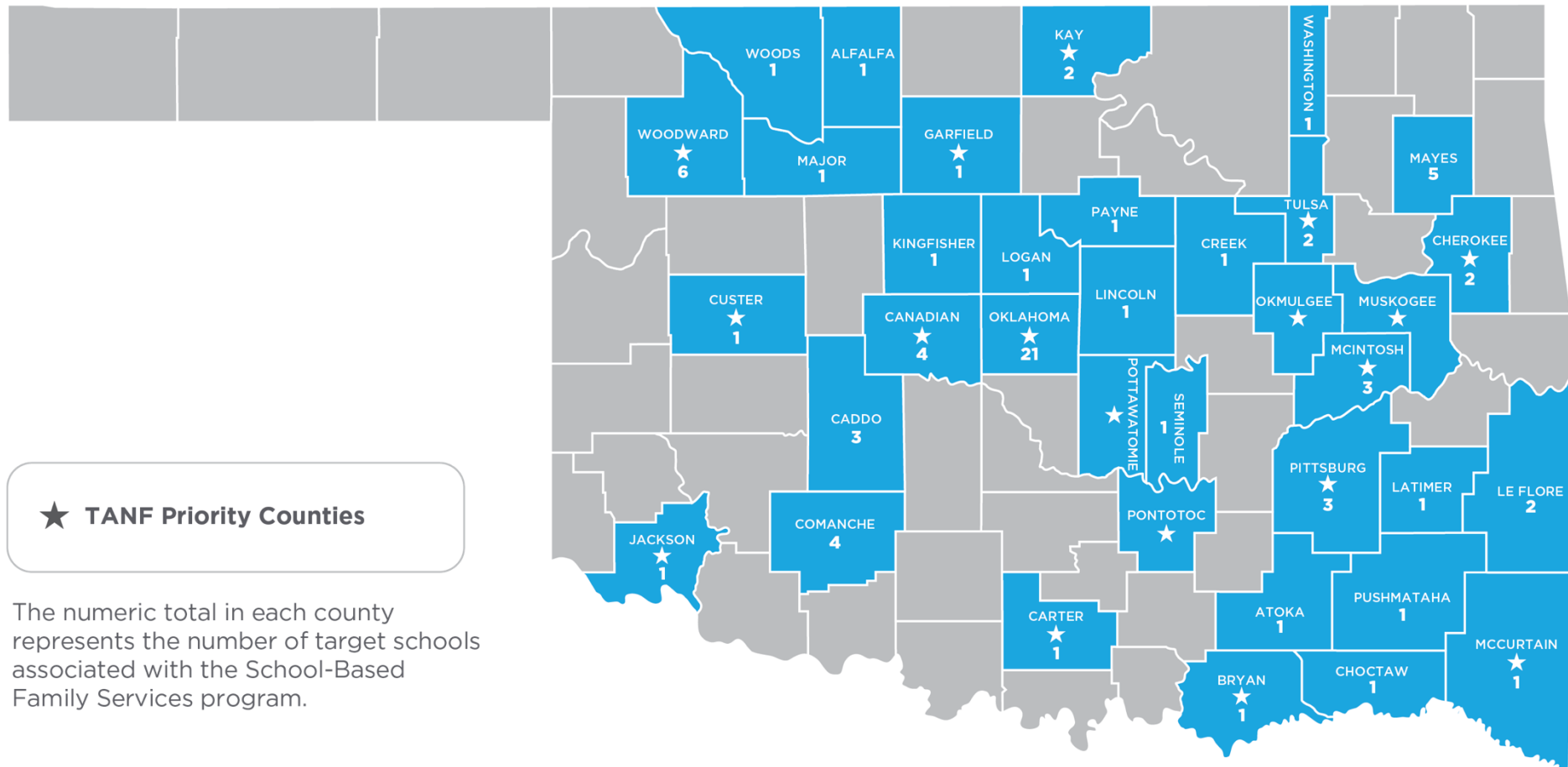
## Contracted Schools

Broken Arrow Public Schools  
Checotah Public Schools  
Chickasha Public Schools  
Claremore Public Schools  
Coalgate Public Schools  
Dover Public Schools  
Durant Public Schools  
Epic Charter Public Schools  
Grandview Public schools  
Guthrie Public Schools  
Guymon Public Schools  
Kingfisher Public Schools  
Maryetta Public Schools  
Muskogee Public Schools  
OKC – Heronville Elementary

OKC – Thelma R. Parks Elementary  
Oklahoma School for the Blind  
Oklahoma School for the Deaf  
Roland Public Schools  
Seminole Public Schools  
Shawnee Public Schools  
Stillwater Public Schools  
Tahlequah Public Schools  
Tecumseh Public Schools  
Tulsa School for the Arts & Science  
Union Public Schools  
Wagoner Public Schools  
Webbers Falls Public Schools



# SCHOOL-BASED FAMILY SERVICES TARGET COUNTIES





# School-Based Family Specialists: Supporting Students And Families

## **Families**

- Housing and utility aid
- Parenting education resources
- Counseling support & resources
- Substance abuse resources
- Health & hygiene support

## **Students**

- Behavioral support and services
- Mental health support and services
- Academic support and services
- Social support and resources

# Working Together Benefits Everyone



## Communication

Clear, effective communication ensures every child's needs are promptly addressed and preventative action is taken.



## Collaboration

Joint efforts between schools, caregivers *and* OKDHS create solutions that enhance student success and family well-being.

**Together, we can build a supportive environment for every child's success.**



# Partner With Us to See More Changed Lives!

1. Scan this QR code
2. Complete interest form
3. Get ready to help more students and families

**THE APPLICATION WINDOW  
IS NOW OPEN.**





Safe Families & Community Partners



Safe Families  
OKLAHOMA

# OUR PRESENTERS



**Jessica Waszak**

Safe Families Director



**Melanie Shafah**

Community Engagement  
Supervisor



**Kim Stutzman**

Family Support Supervisor



# SAFE FAMILIES OKLAHOMA

Volunteer-driven, professionally supported organization that hosts vulnerable children and creates extended, family-like support for families in crisis through a community of compassionate volunteers!

**Overcoming Social Isolation**

---



# PARTICIPATING PARENT

We serve those who have legal authority over the child(ren). This can be their parent, grandparent, or legal guardian. Child(ren) cannot be in state custody.

## HOW WE SERVE

### Voluntary

The participating parent must be willing to voluntarily engage with Safe Families services and complete all required documentation.

### Temporary Hosting

Children will be hosted in a Safe Families volunteer home for 2 days to 6 months while parents are addressing other barriers.

### Address Individual Challenges

Safe Families works closely with the family in their time of crisis to help address individual challenges such as such as homelessness, medical needs, inpatient needs, employment barriers, or other life circumstances.

### Lack of Natural Supports

Family lacks access to safe and healthy friends or family to step in to care for child(ren) at the time of a crisis..



# CIRCLE OF SUPPORT



## Participating Family/Family in Crisis

Seeks temporary hosting of children in time of need, ensuring struggling parents have options



## Host Family

Voluntarily hosts children in their home on a temporary basis



## Family Coach

Helps families meet their goals and encourages host families



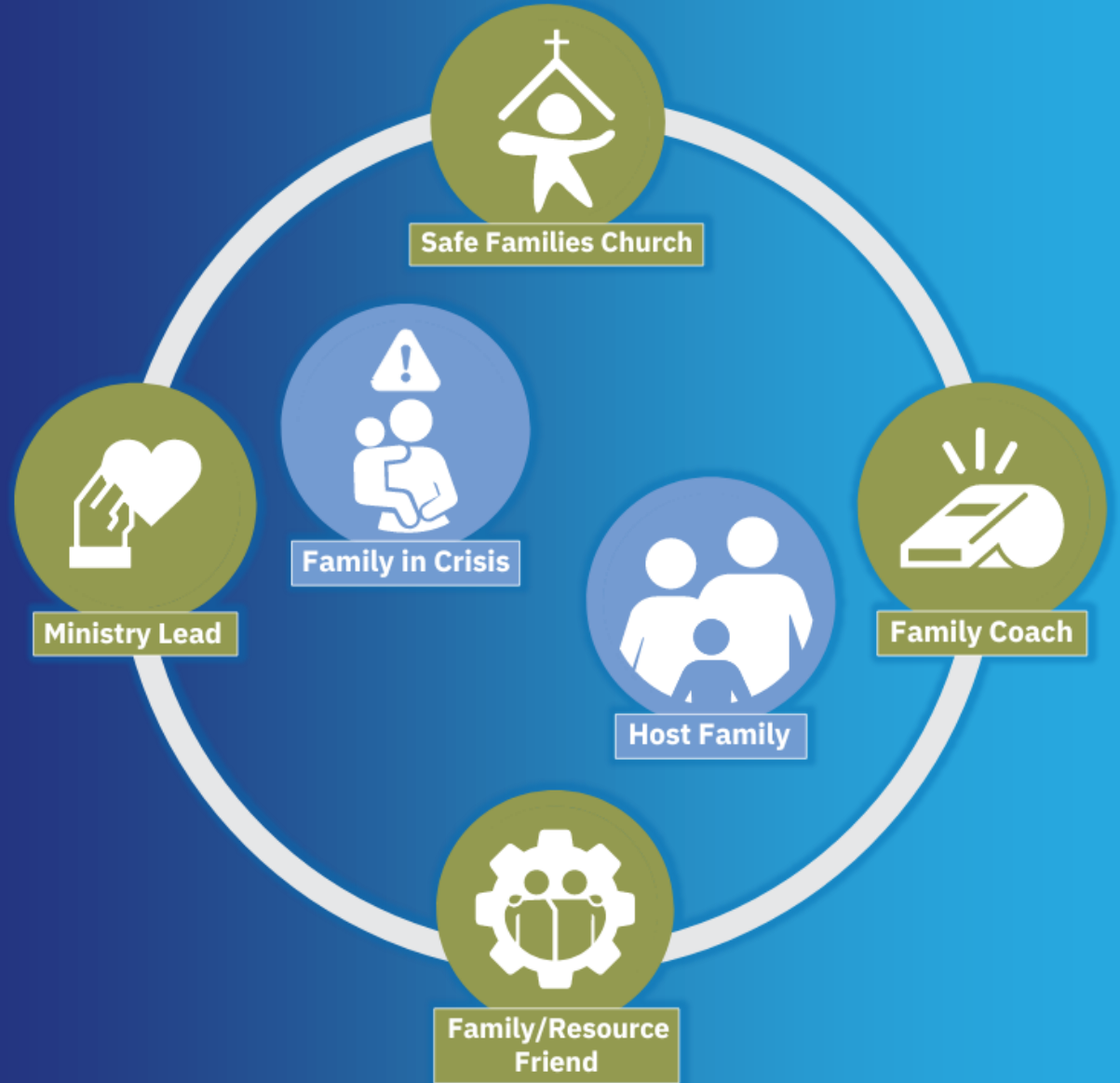
## Family Friend

Encourages, supports, and/or provides goods and services to families



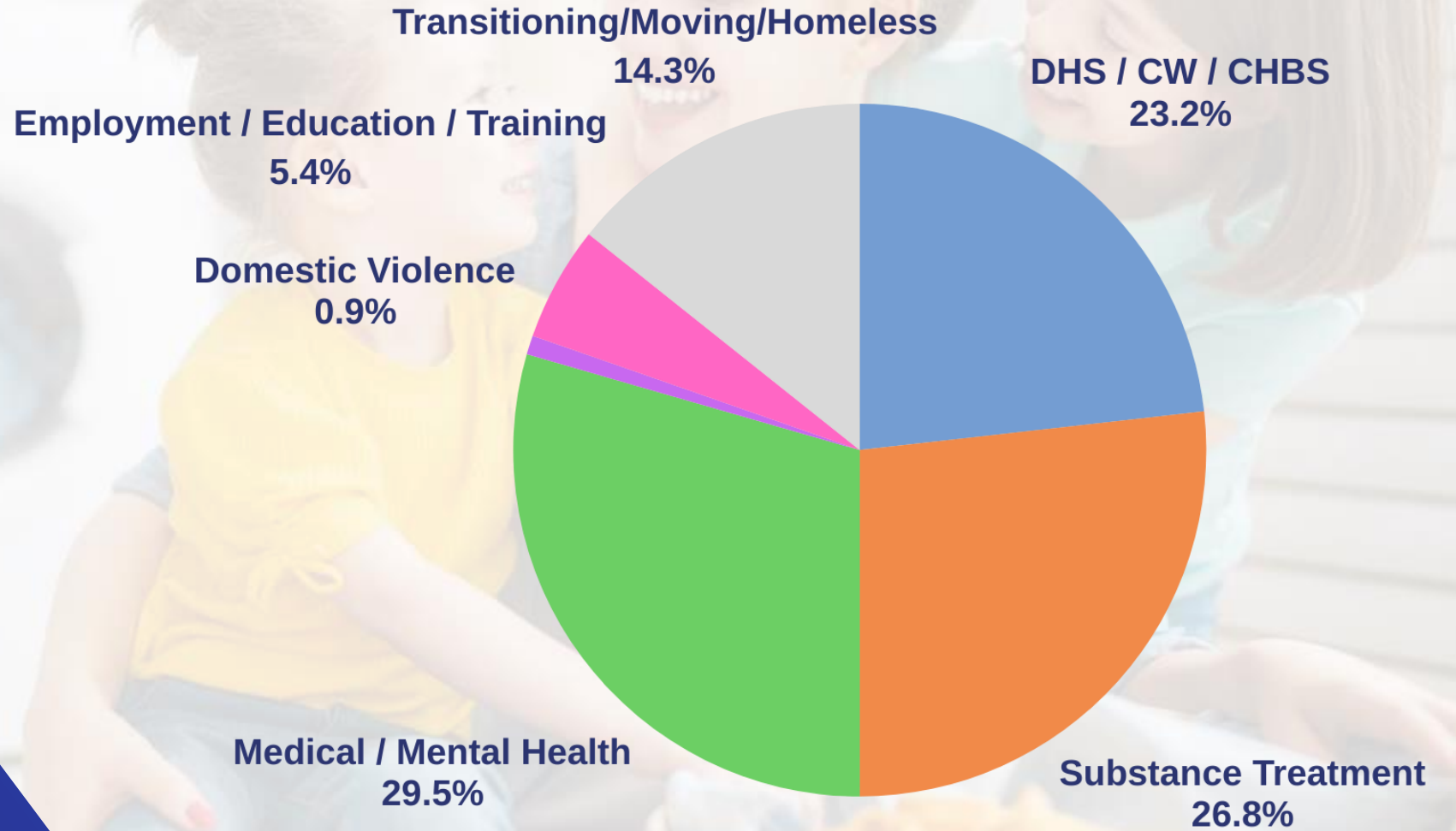
## Safe Families Church

Engages and supports local volunteer network





# 2024 REASONS FOR HOSTING



# THINGS TO CONSIDER

Safe Families has the ability to support families in crisis. However, certain circumstances may not allow for hosting opportunities.



**Therapeutic Level of  
Care**



**Risk Factors**



**Unwillingness to  
Engage**







# HOW TO MAKE A REFERRAL

Parents, community agencies, and partner organizations can make referrals.

Referral Line:

**405.418.3825**

[SafeFamiliesOK.org](https://www.SafeFamiliesOK.org)



# THANK YOU

**We look forward to  
strengthening families  
with you!**

[www.safefamiliesok.org](http://www.safefamiliesok.org)





# Familyhood

## Statewide Training