

# Familyhood

## Statewide Training

# TANF Modernization Plan

A Person-Centered & Purpose-Driven Strategy  
For Low-Income Families

# Four Goals of Temporary Assistance for Needy Families (TANF)

1. Provide **assistance** to needy families with children so that they can live in their own homes or the homes of relatives
2. End **dependence** of needy parents on government benefits through work, job preparation, and marriage
3. Reduce **pregnancies** outside of marriage
4. Encourage the **formation and maintenance** of two-parent families

# Leveraging Expert Insights for Strategic Success

## Research Advisory Group (RAG)

- Assembly of experts in social policy, economics, and social work to guide strategic development of TANF initiatives
- Advisory role from diverse perspectives ensures alignment with best practices
- Drives evidence-based, effective interventions
- Provides open, regular updates and public engagement



# TANF MODERNIZATION



## **CRISIS SUPPORT & FAMILY STABILITY**

Providing aid and services to stabilize families in need



## **SELF-SUFFICIENCY – WORK & TRAINING**

Empowering parents with the skills and opportunities to secure stable employment



## **SELF-SUFFICIENCY – STRONG FAMILIES**

Strengthening families to create environments where children can thrive



## **COLLABORATION & SUPPORT**

Facilitating partnerships and integrated services for comprehensive family support

*Oklahoma's TANF program is purposefully designed to transform the lives of the state's most vulnerable families, setting them on a path toward independence and resilience.*



- Temporary cash assistance for vulnerable families with children
- Work participation payments
- One-time payments in lieu of TANF assistance
- Transportation assistance through local contracts statewide
- Flex funds and supportive services to meet the immediate needs of families
- Emergency food assistance
- Family support payments for families of children with special needs



- Skill-building services through Work Ready Oklahoma to support low-income adults in achieving access to career pathways and employment with a livable wage (21 sites statewide)
- CareerTech and State Regents partnerships to provide education and training opportunities, including basic education (high school equivalency/literacy) and industry-recognized training
- TANF coaches to support goal planning and achievement
- Assessments to determine job fit and success
- Pilot Jobs for America's Graduates (JAG) sites through interagency partnership (10 sites)



- Skill-building in the areas of parenting, fatherhood, healthy relationships, and financial literacy — the four anchors in thriving families — with stronger penetration in target counties where TANF-funded workforce services are also offered
- Capacity-building for evidence-based content that benefits low-income families across the four skill-building priority areas through partnerships with statewide systems and local entities
- Educational gatherings of vulnerable families with shared life challenges for training, resource education, and support
- Family-strengthening and youth programming in local communities through TANF Investment Strategy contracts



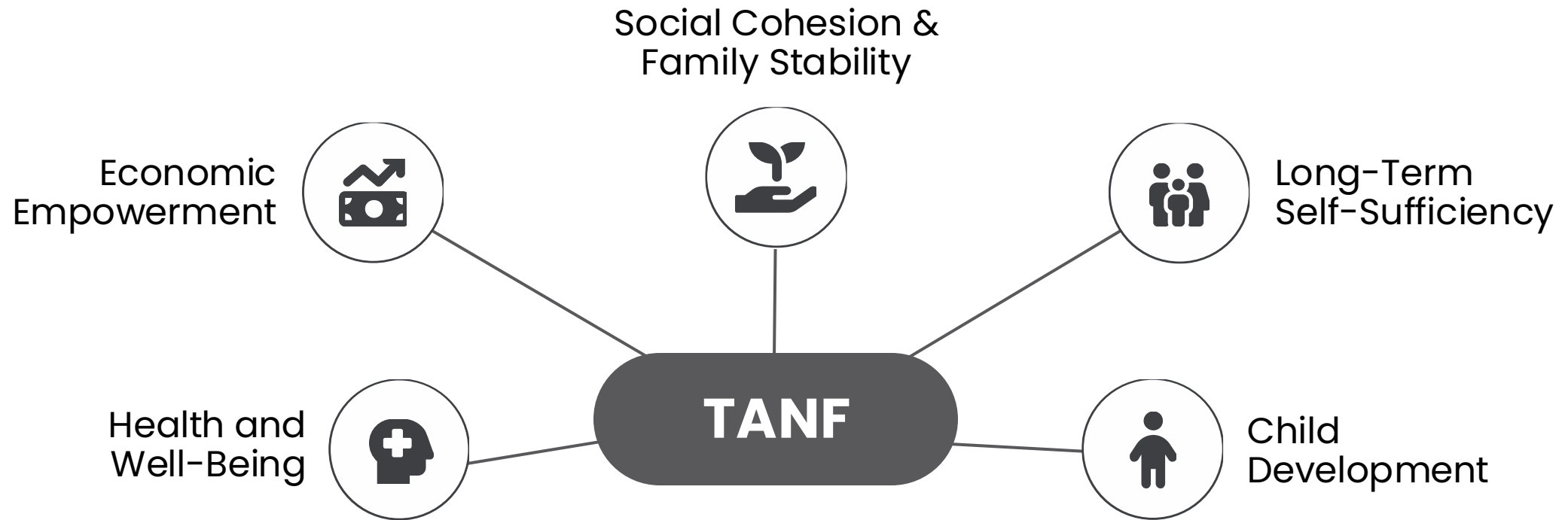
- Evidence-informed educational workshops for high school students to prepare them to make healthy relationship choices that can have lifelong impacts
- Support for a multiagency youth employment initiative
- School-based social service specialists, kinship navigators, and a Safe Families support system statewide, with prioritization of target counties
- Multiagency collaboration to build resilient Oklahomans in targeted communities





- **Child Care & Protective Services:** TANF funds support the Social Services Block Grant (SSBG) and the Child Care Development Block Grant (CCDBG), consistent with federal allowances, ensuring that child care is available for families served by TANF initiatives
- **Child Care:** As carryover dollars allow, additional resources are provided to the CCDBG for child care
- **Safety:** Child welfare supports include relative foster care, adoption, and guardianship payments as well as other family preservation, reunification, and child welfare services
- **Program Management:** TANF funds support administrative, assessment, service provision, and systems costs

# Transforming Oklahoma Through TANF Modernization





# A Comprehensive Approach to Family Empowerment

**Familyhood**

# Work Ready Oklahoma

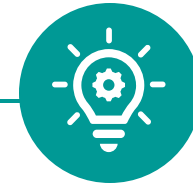
A statewide distribution system built to:

- Provide employment hope and results for financially vulnerable Oklahomans
- Integrate best practices and innovative strategies
- Rapidly establish a community network for workforce solutions
- Equip and empower individuals with self-sufficiency
- Be a partner of choice for local employers
- Create economic opportunities for financially vulnerable Oklahomans
- Contribute to building and equipping the Oklahoma workforce

# Work Ready Oklahoma Statewide Expansion

## Goals

- Equip Oklahomans to become self-sufficient with information, coaching, and connections
- Help Oklahomans find — and retain — consistent, gainful employment in their communities
- Make available a pipeline of jobs that pay a livable wage through remote work and local employment partnerships

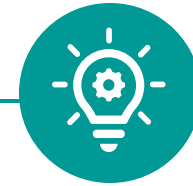


**Providing the skills and support Oklahomans need to achieve self-sufficiency, engage in healthy relationships, and support their families financially**

# Work Ready Oklahoma Statewide Expansion

## People We Serve

- Financially vulnerable Oklahomans eligible for safety net services
- Unemployed or underemployed individuals
- Individuals re-entering society from incarceration
- Incumbent workers seeking advancement
- Veterans

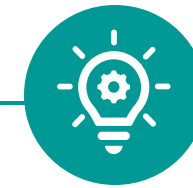


**Providing the skills and support Oklahomans need to achieve self-sufficiency, engage in healthy relationships, and support their families financially**

# Work Ready Oklahoma Statewide Expansion

## Services

- Work-preparation training and activities
- Assessments to ensure individual job fit
- Coaching toward employment goals
- Support for job searching and attainment
- Access to quality jobs through employer partnerships
- Coworking with the opportunity for coaching to help launch a new career
- Connection to the community network of services



**Providing the skills and support Oklahomans need to achieve self-sufficiency, engage in healthy relationships, and support their families financially.**

# Agency Commitment to Strengthening Families

- A best-practice and research-informed statewide strategy that engages systems, communities, and local entities in building the capacity of vulnerable Oklahomans to improve family well-being and self-sufficiency
- 

- Parenthood
- Fatherhood
- Motherhood
- Childhood
- Neighborhood
- Livelihood





Wellspring hosts free weekend events that inspire community support, personal growth, and hope by strengthening family relationships and offering access to supportive resources.



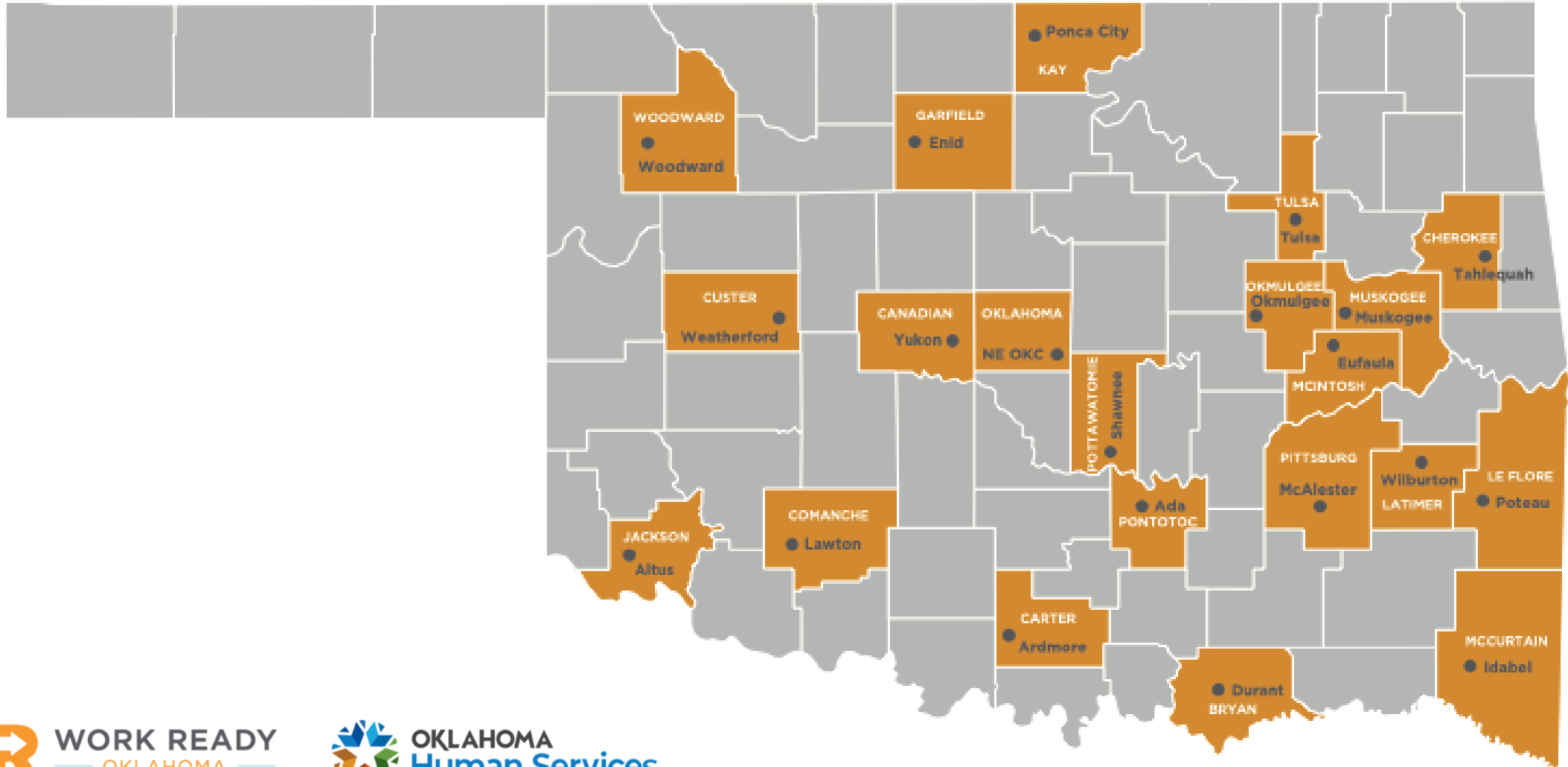
Family Expectations is a free program to help new and expectant parents prepare for a new baby, strengthen couple or co-parenting relationships, and connect with job opportunities to best support individual and family goals.



TRUE Dads is a free program that helps dads be the kind of father they want to be by helping them learn how to be there for their kids, work better with their co-parent, and find and keep a better job.

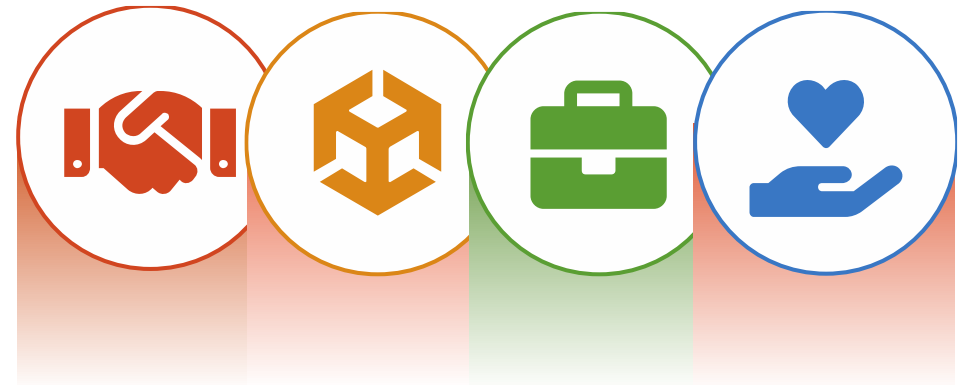
Priority Counties

# TANF Modernization



# Expanding Statewide Services for Enhanced Family Support

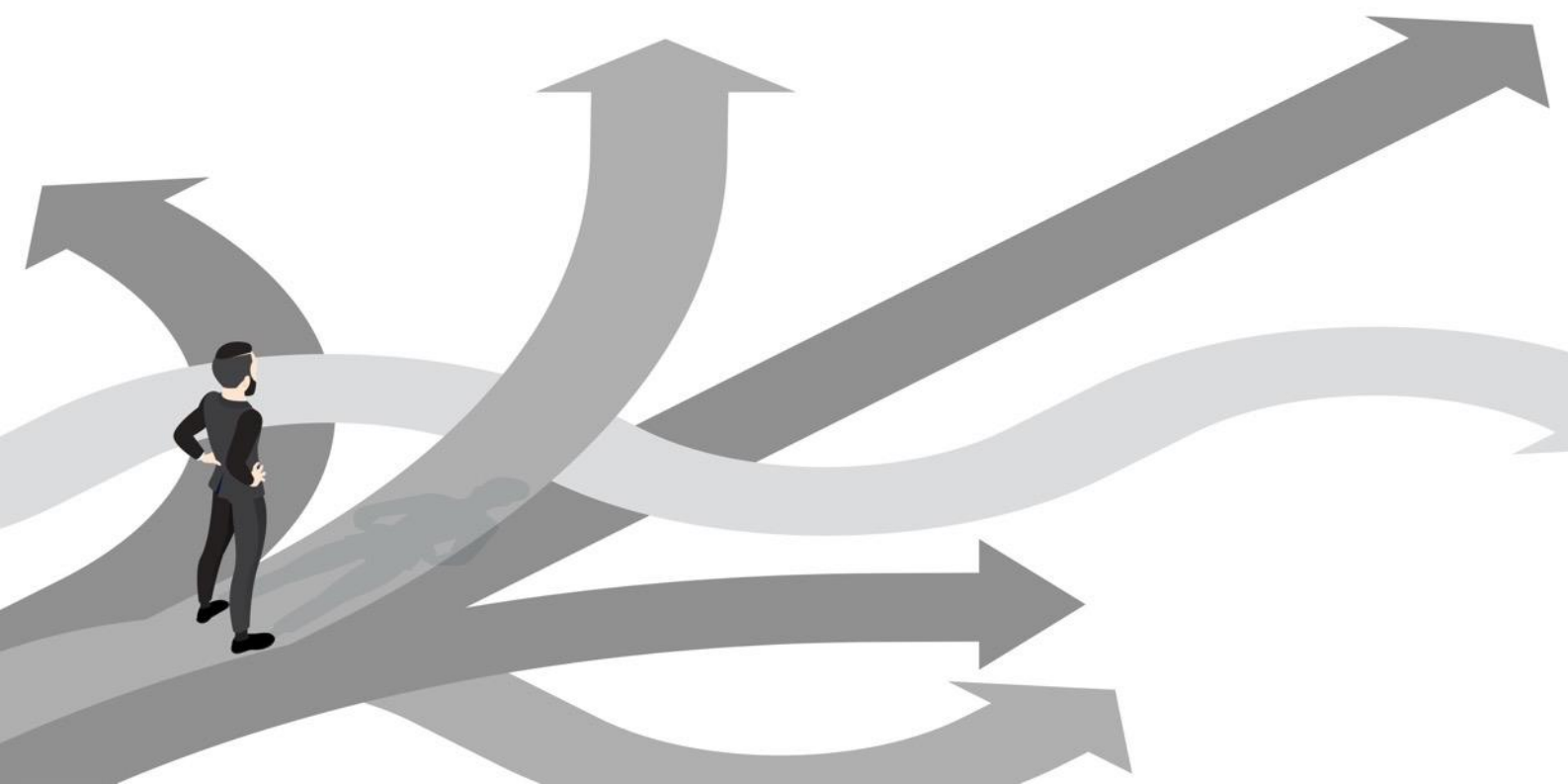
- Strategic service placement
- Collaborative partnerships
- Comprehensive family support
- Recognition of poverty's complexity



Work Ready Oklahoma and Familyhood: A comprehensive support network that ensures parents are workforce-ready and supported with essential services like childcare and transportation

# The Path Forward Toward Family Support Across Oklahoma

- Continual refinement and expansion
- Adapting to socioeconomic changes
- Strengthening partnerships
- Innovation in service delivery
- Commitment to transparency

An illustration of a person in a dark suit standing on a path of several large, grey, curved arrows that point in various directions, symbolizing a path forward or a journey. The person is positioned on the left side of the frame, looking towards the right.

Together, we are building a responsive and effective framework to support Oklahoma's families, today and tomorrow.

# Questions?

**Deborah Smith | Deputy Director**

Adult and Family Services | Child Care Services  
Child Support Services

Phone: 405-388-4315

[DeborahG.Smith@okdhs.org](mailto:DeborahG.Smith@okdhs.org) | [www.OKDHS.org](http://www.OKDHS.org)



# Familyhood

## Statewide Training