

Familyhood

Statewide Training

Better Together:

The Impact of Co-Location Service Models

Introductions

- **Rebecca Hayes**, Family/Work Co-Location Learning Lab
- **Jurhee Miller**, Family Tree
- **Rachel Harris**, Enid Community Development Support Association
- **Becky Porter**, LIFT Family Resource Center

Family & Work Co-Location Learning Lab

Organizational Partnership



Mission

Public Strategies is committed to innovative approaches for unlocking human potential and powering community change.

Partners

Serving the community together since 2003

Mission

IMCI strengthens communities by building strong, healthy families.

Service Continuum



Shared Commitment

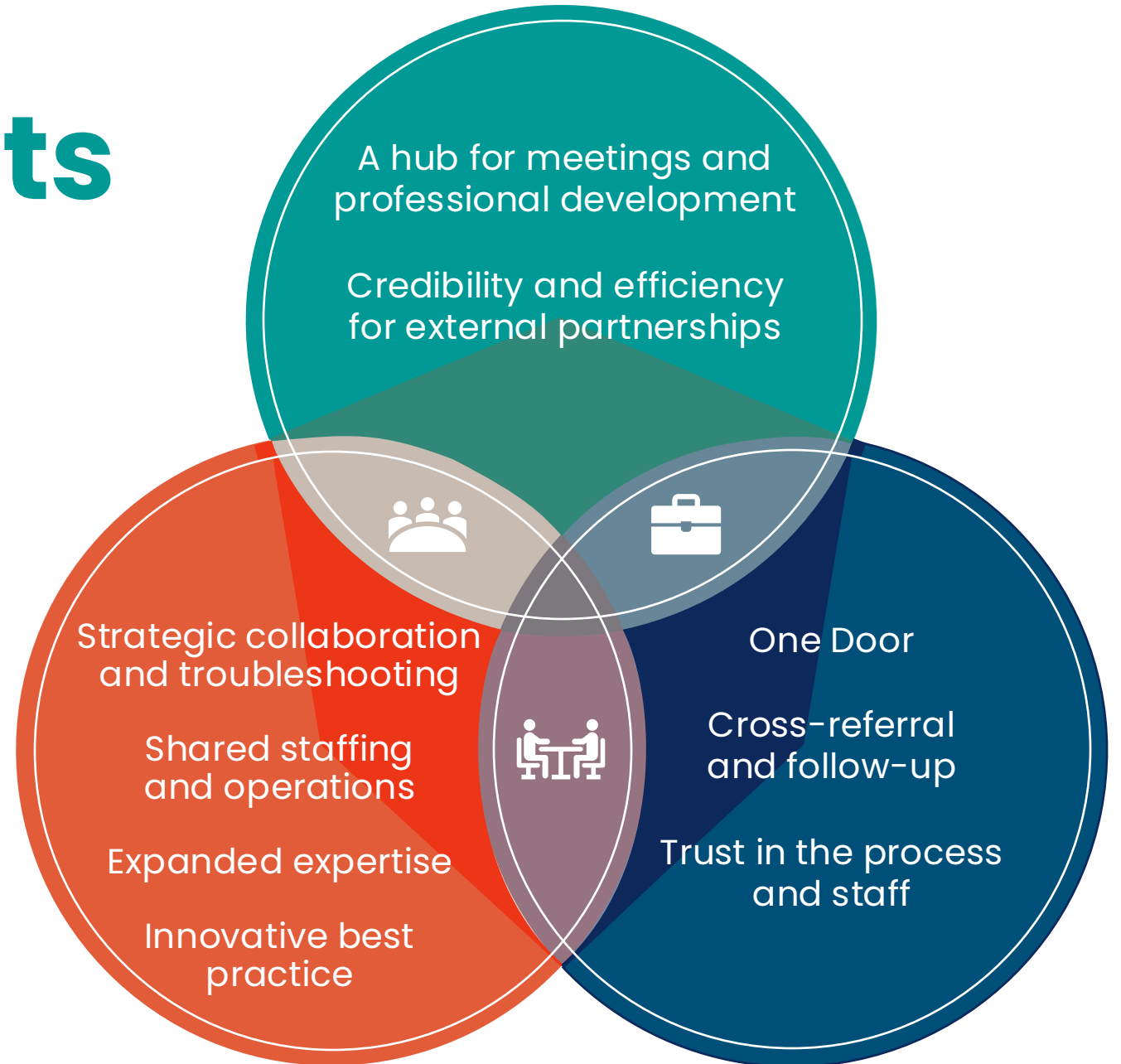


Mutual Benefits

● **Community**

● **Participants**

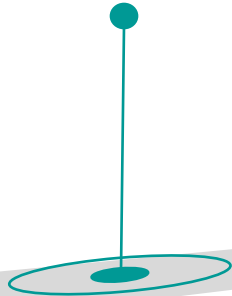
● **Provider**



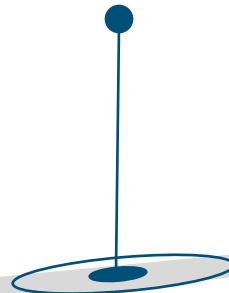
Our Impact



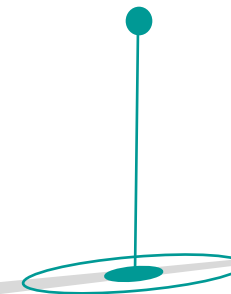
Daily Average:
~60 people



Weekly Average:
~350 people



Monthly Average:
~1400 people



Family Tree Overview

- A collaborative effort of Oklahoma County Child Welfare, OU Medical, OU Behavioral Health, CASA and Northcare to strengthen families encountering the Child Welfare System.



Strengthening Families and Our Community

About Us

- The Family TREE opened in September 2016 as a collaborative program of Child Welfare and Council for Children and Families (CCF)
- It is designed to be a transformative space for hope, strength, and positive change to take root. Within the TREE, families involved in the Child Welfare System are supported through Team, Resources, Evaluation, and Education (TREE), all purposefully dedicated to renewing and reunifying their families.



Goals of the Family TREE

Family TREE uses a multi-disciplinary approach to strengthen families and enhance child welfare practice, to ultimately achieve the following goals:

- Increase the rate of safe and appropriate family reunification
- Improve placement stability
- Expedite the time between removal and safe and appropriate reunification (or an alternative permanency plan when reunification is not possible)
- Decrease the likelihood of future need for Child Welfare Services following reunification or alternative permanency



Creating the Family TREE Model

Research of models already in existence provided the guidance for helping us achieve the best outcomes for those we serve:

- Quality, frequent family time (CHBS)
- Support for kinship placements (Family KINnections)
- Timely connection to appropriate services
- Multi-disciplinary team (Family Resiliency Team)



Criteria

To qualify for randomization (services), there must be:

- A case plan goal for **Reunification**
- At least one child placed in **Oklahoma County**
- At least **one child under 12**

Services Provided

Families served by the Family TREE receive the following services on-site and in the community:

- Specialized input from the Family Resiliency Team through regular staffings and consultation
- At least weekly visitation
- Evidence-based Comprehensive Home-Based Services (CHBS) from the beginning of the case during visitation
- Service system navigation from the CHBS worker
- Medical screening for children within weeks of entering custody
- Increased focus on meeting the mental and behavioral needs of children through enhanced assessment, partnership with the OU Child Study Center, an on-site clinician, and consultation
- Family KINnections provider to work with the kinship families to maintain placements
- Parent Partner provider to support bio parents navigate the process





Co-Location:

Empowering Nonprofits,
Serving Families

CDSA's The Non-Profit Center:
Sharing space, reducing costs,
enhancing service delivery

By Rachel Harris

The Birth of Collaboration

1

2012

CDSA develops innovative nonprofit center concept

2

Space Sharing

Nonprofits begin collaborating, sharing resources

3

Cost Reduction

Shared expenses lead to significant savings

Prime Location, Prime Services

Downtown Enid

Highly visible, easily accessible location

Quality Workspace

Top-tier office and meeting facilities

Affordable Rates

Cost-effective solutions for nonprofit organizations

Comprehensive CDSA Programs



1

All-in-One Access

Every CDSA program available under one roof

2

Streamlined Services

Efficient delivery of multiple support offerings

3

Holistic Approach

Addressing diverse community needs comprehensively

Benefits for Families



Time-Saving

Multiple services in one convenient location



Coordinated Care

Seamless integration of various support programs



Reduced Stress

Simplified access to essential resources

Nonprofit Tenant Advantages

Cost Efficiency

- Shared expenses reduce individual organization costs, making resources go further.

Networking Opportunities

- Increased collaboration among co-located nonprofits fosters a supportive community and maximizes impact.

Enhance Visibility

- Prime downtown location increases community awareness and builds stronger connections.

Resource Sharing

- Access to shared facilities and equipment streamlines operations and foster collaborative solutions.

Community Impact



1

Centralized Services

One-stop resource hub for community members

2

Improved Accessibility

Easier access to multiple support programs

3

Enhanced Collaboration

Strengthened partnerships among local organizations

4

Economic Boost

Increased activity in downtown Enid area

Future Growth and Opportunities



Expansion Plans

Potential for additional space and services



New Partnerships

Opportunities for more nonprofits to join



Enhanced Programs

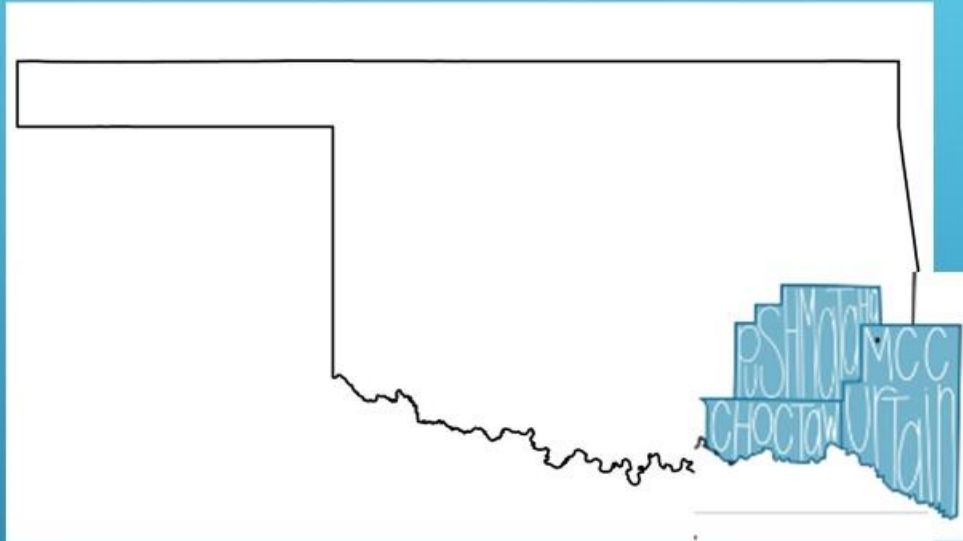
Continuous improvement of existing services



Community Action Agency

HELPING PEOPLE. CHANGING LIVES.

CORE SERVICES AREA



Additional Territories:



Services Provided:

502 Direct Loan Packaging
Housing Counseling
Residential Lending
Self-Help Housing

Small Business Lending
T&MA
Weatherization



Services Provided

- Early Childhood Development and Education
- Healthy Start
- Affordable Housing (single and multi-family)
- Emergency Food and Shelter Program
- Lending
- Second Chance Re-entry
- Tourism Development
- Transportation
- Tri-County Opioid Response
- Victims Advocacy
- Youth Build
- Work Ready Oklahoma
- Fatherhood
- Youth Mentoring
- Weatherization



Family Resource Center

LIFT Head Start Administration
 1005 S 5TH ST.
 Hugo, OK 74743
 Monday-Friday 8:00-4:30

580-326-7581



*Contact us, today!
 We are here to help!*

SERVICES PROVIDED:

- Parent Trainings
- Access to Resources
- Child Development Activities

WE SERVE CHOCTAW,
 MCCURTAIN, &
 PUSHMATAHA COUNTY!



Family Resource Center

Centralized Hub for Families

- Access information and referrals
- Direct Support
- Family Resource
- Parent Training and Education
- Employment
- Group Workshops
- Health Services
- Multi-Generational Services

Building resilient children, families and community

Navigating the Future

- Foster the healthy development and well-being of children and families
- Enhance parenting skills
- Help prevent child abuse and neglect
- Increase school readiness
- Promote family economic success
- Help address the adverse childhood experiences from the pandemic years
- Community impact
- Seamless access to services

Questions



Familyhood

Statewide Training