

Familyhood

Statewide Training

Leveraging School-Based Solutions to Benefit Youth and Family Success

Dr. Ronald B. Cox Jr., Oklahoma State University

Monica Brumnett, Oklahoma Department of Human Services

Holly Hanan, Oklahoma Career Technology | Family and Consumer Sciences

Camal Pennington, It's My Community



United We Can!

A multisector approach to
positive youth development

Dr. Ronald B. Cox Jr.

Oklahoma State University

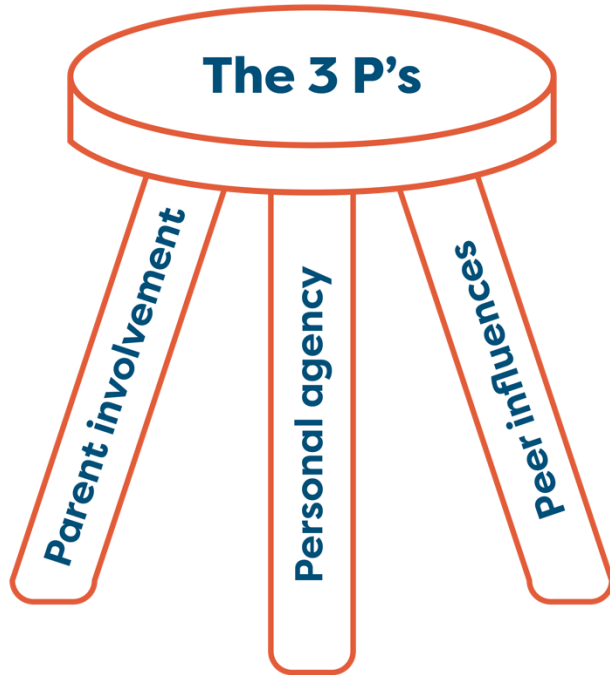
The urgent need for strong schools!

A review of 25 years of research on the relationship between academic achievement and the six leading causes of disability, social problems, and death among adolescents found an inverse relationship in 97% of studies.

Why focus on schools?

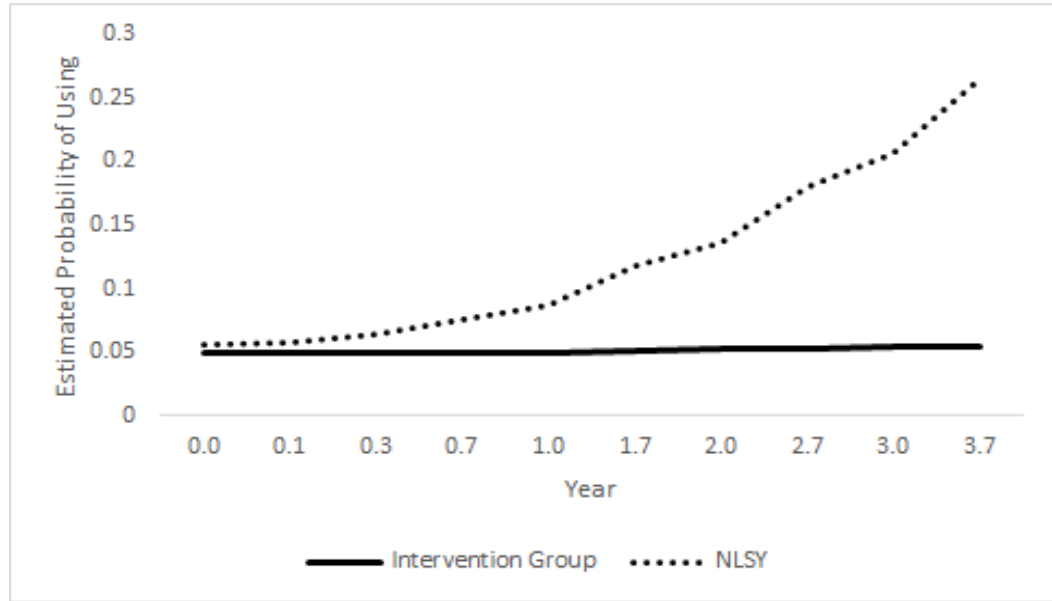
- **“Adolescent developmental cascades”**
 - Problems in one area can lead to problems in other areas
 - Competence in one domain of life becomes the scaffold for competence in other domains
- **Aligning program goals with the goals of school administrators and parents increases school and parent “buy-in”**
 - Recruitment
 - Dosage
 - Community penetration
- **Leading to greater results and increased opportunity for program scale-up**

Positive youth development and school success



United We Can! vs. Control

- Cox, R. B., Washburn, I., Greder, K., Sahbaz, S., & Lin, H. (2022). Preventing substance use among Latino youth: Initial results from a multistate family-based program focused on youth academic success. *The American Journal of Drug and Alcohol Abuse*, 48(1), 69-77.



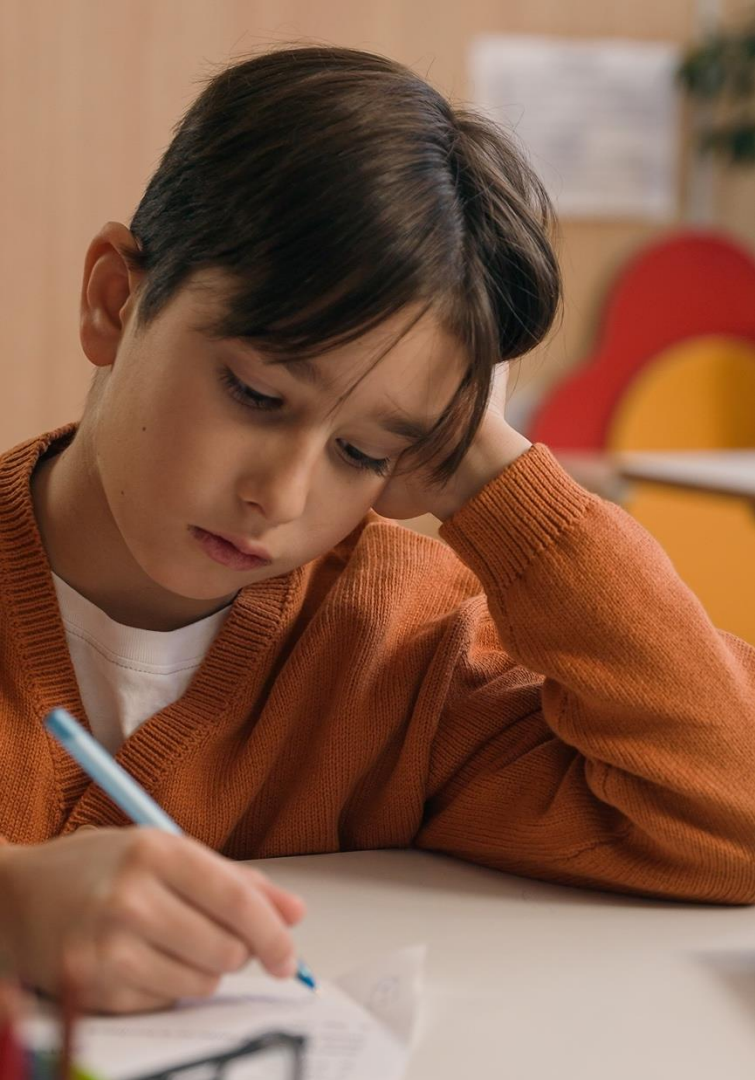
Illegal Drug Use for Youth in United We Can (OR = 0.97, $p = 0.00$) compared to the National Longitudinal Survey of Youth (OR = 0.52, $p = 0.00$) from the 7th to 10th grades.



Parent Involvement

- Parental involvement changes the school culture
- Impacts student Alcohol, Tobacco, and Other Drugs (ATOD) use
- Not all parents needed

Cox Jr, R. B., Washburn, I. J., Croff, J. M., & Ringwalt, C. L. (2021). Parental School-Involvement and Substance Use? A Novel Family-Based Prevention Strategy for Latino Youth. *Family Relations*, 70(4), 1178-1189.

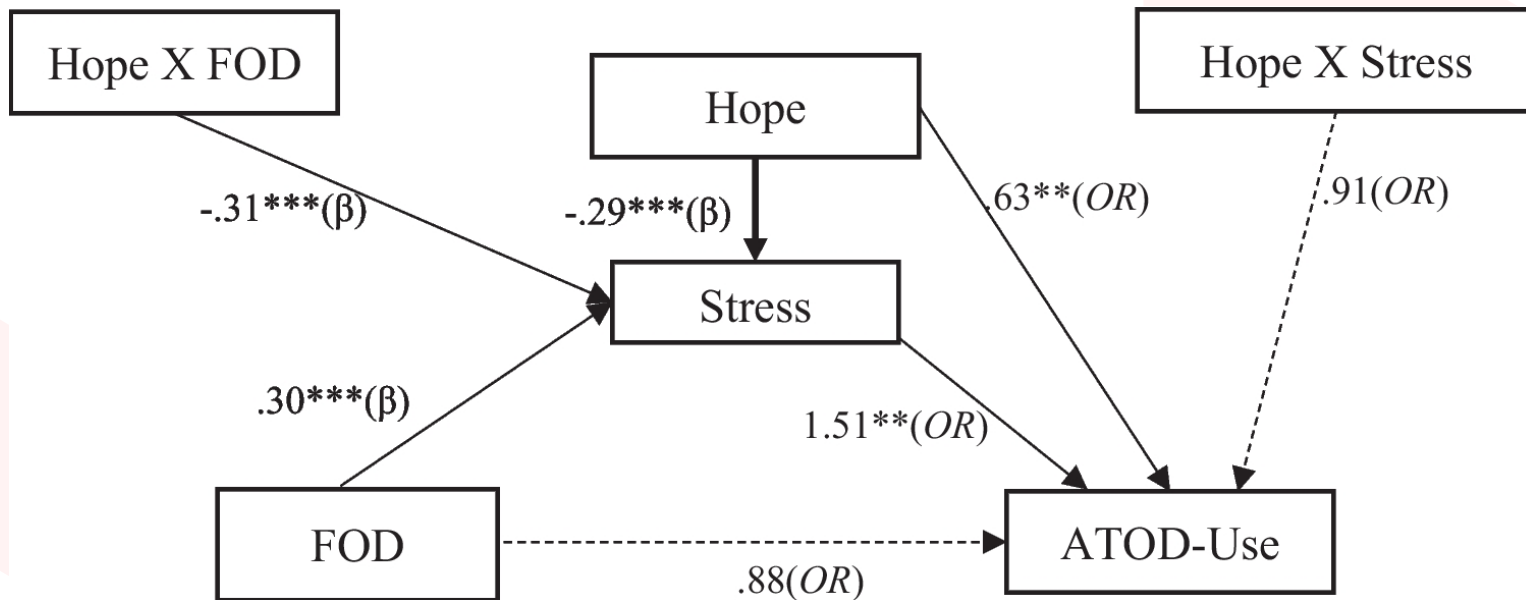


Parent Non-Involvement

- Feeling welcome vs. language barriers
- Lack of transportation vs. work schedules
- How behavior is interpreted is ultimately important
- How school talks about parents matters

Alexander, J. D., Cox Jr, R. B., Behnke, A., & Larzelere, R. E. (2017). Is all parental “noninvolvement” equal? Barriers to involvement and their relationship to Latino academic achievement. *Hispanic Journal of Behavioral Sciences*, 39(2), 169-179.

Goal-Driven Hope



Cox, R. B., Lin, H., Larzelere, R. E., & Bao, J. (2024). Fear of deportation and Hispanic early adolescent substance use: a moderated mediation model of stress and hope. *Prevention science*, 25(2), 318-329.



Peers and Community

Participation in a 4-H STEM Institute on the OSU campus led to a positive impact on the youth's perception of STEM as a career option.

Sallee, J., Cox, R. B., Flores, R., Cooper, S. R., Gomez, B. I., Gifford, C. A., & Hernandez-Gifford, J. A. (2019). Linking experiential workshops and increased STEM interest among first- and second-generation Latino youth. *Journal of Youth Development*, 14(1), 198-215.



Chronic Absenteeism

New collaboration between OSU and TPS Parent Involvement Facilitators.

Conclusion

Questions and Comments

School-Based Family Services

Monica Brumnett

OKDHS Program Administrator

Students across Oklahoma

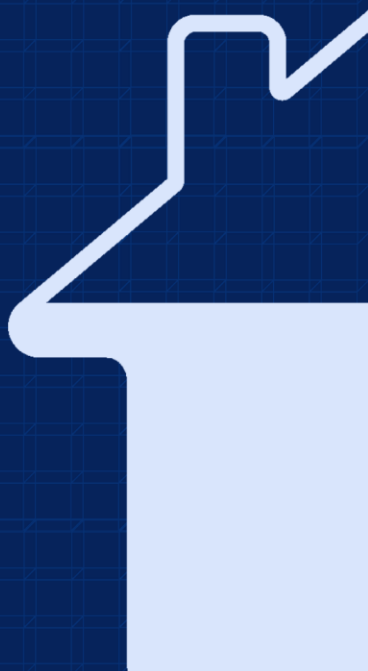


Barriers to student success and well-being

57%

of educators surveyed
believe a top barrier to
student success is

**challenges
outside
of school.**



Source: 2024 McGraw Hill Global Education Insights Report

45%

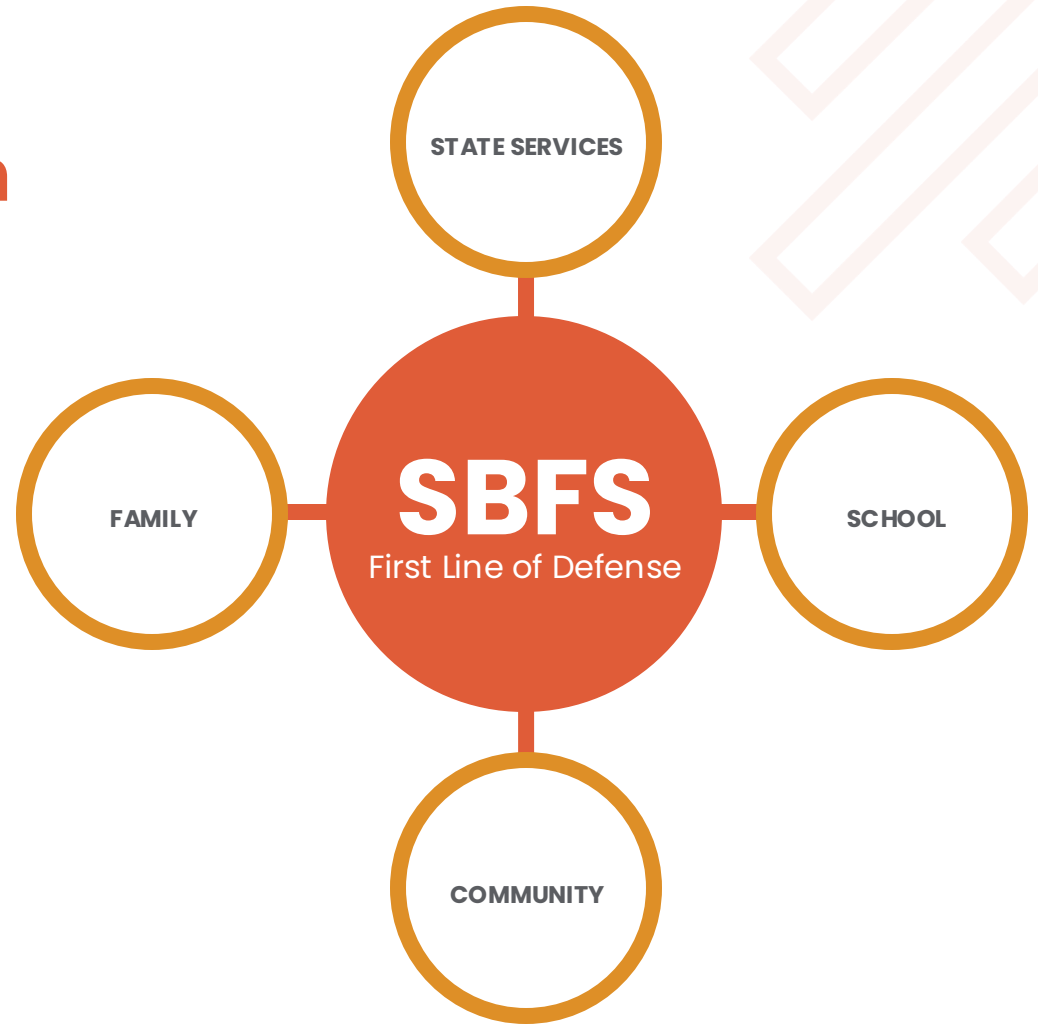
of educators surveyed
believe a top barrier to
student success is

**struggles with
behavioral and
mental health
issues.**



Source: 2024 McGraw Hill Global Education Insights Report

A solution: early intervention



Our purpose



1. PREVENTATIVE SERVICES
2. FIRST LINE OF DEFENSE
3. OVERCOME BARRIERS
4. POSITIVE COLLABORATION
5. COMMUNICATE & SUPPORT
6. IMPROVE OUTCOMES
7. COMMUNITY WELL-BEING
8. REDUCE RISK FACTORS
9. PROVIDE RESOURCES

SBS program growth & success

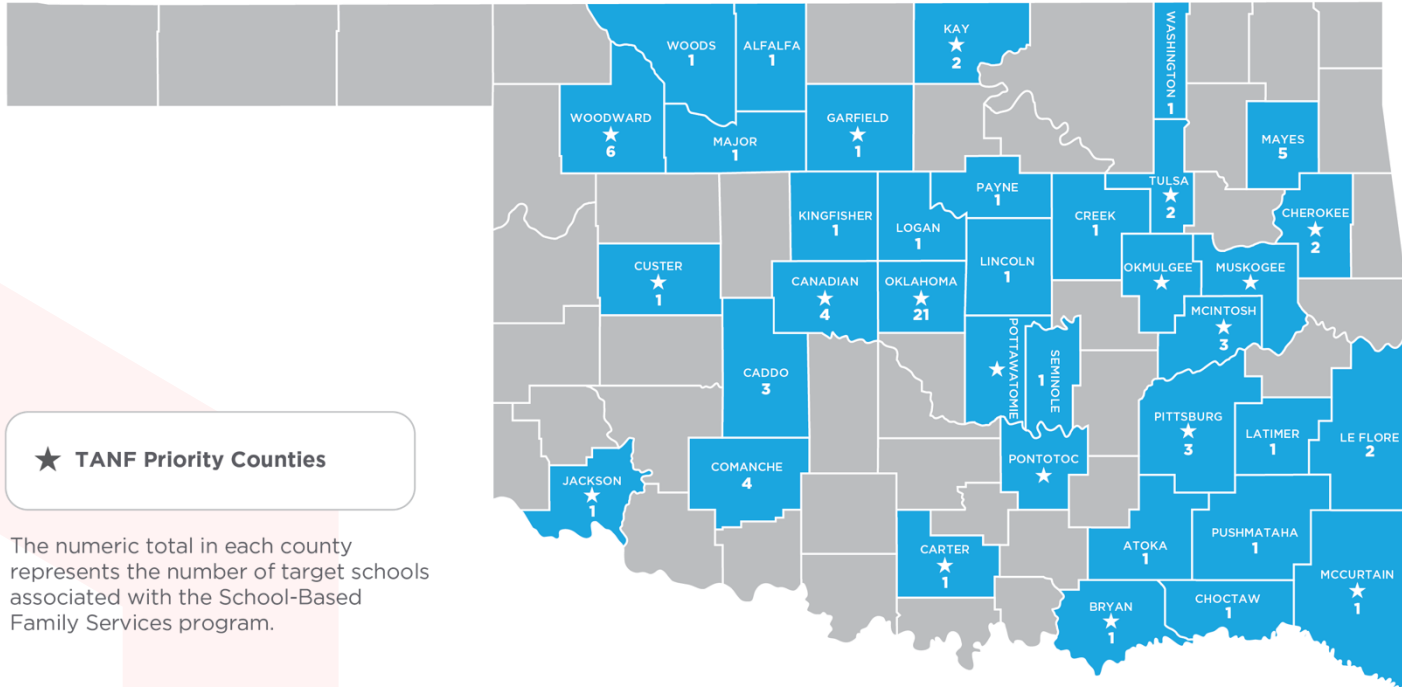
Contracted Schools

Broken Arrow Public Schools
Checotah Public Schools
Chickasha Public Schools
Claremore Public Schools
Coalgate Public Schools
Dover Public Schools
Durant Public Schools
Epic Charter Public Schools
Grandview Public schools
Guthrie Public Schools
Guymon Public Schools
Kingfisher Public Schools
Maryetta Public Schools
Muskogee Public Schools
OKC – Heronville Elementary

OKC – Thelma R. Parks Elementary
Oklahoma School for the Blind
Oklahoma School for the Deaf
Roland Public Schools
Seminole Public Schools
Shawnee Public Schools
Stillwater Public Schools
Tahlequah Public Schools
Tecumseh Public Schools
Tulsa School for the Arts & Science
Union Public Schools
Wagoner Public Schools
Webbers Falls Public Schools



SCHOOL-BASED FAMILY SERVICES TARGET COUNTIES



School-Based Family Services: Two Models

- **School-Based Specialists (SBS) Model**

- **OKDHS employee**
- Salary is split **50%-50%** between OKDHS and the school district
- Provides **resources and support** to families
- Staff is monitored and supported by **OKDHS staff in collaboration with the school administrator**

- **School-Based Family Specialists (SBFS) Expansion Model**

- **School district employee hired by school administrator**
- Salary is split **80%-20%** between OKDHS and the school district with OKDHS covering the majority
- Provides **resources and support to families**
- Staff is monitored and supported by the **school administrator in collaboration with OKDHS staff**



School-Based Family Specialists: Supporting Families

- Housing and Utility Aid Resource
- Parenting Education Resources
- Counseling Support & Resources
- Substance Abuse Resources
- Health & Hygiene Support



School-Based Family Specialists: Helping Students

- Behavioral support and services
- Mental health support and services
- Academic support and services
- Social support and resources

Working together benefits everyone



COMMUNICATION

Clear, effective communication ensures every child's needs are promptly addressed and preventative action is taken.



COLLABORATION

Joint efforts between schools, parents, *and* OKDHS create solutions that enhance student success and family well-being.

Together, we can build a supportive environment for every child's success.

Contact Us

PROGRAM ADMINISTRATOR

MONICA BRUMNETT

MONICA.BRUMNETT@OKDHS.ORG

918-430-6184

FIELD MANAGER

HEATHER CRISTIANO

HEATHER.CRISTIANO@OKDHS.ORG

918-244-0667



School-Based
Program Website

DHS.SCHOOLBASEDSERVICES@OKDHS.ORG

Family and Consumer Sciences

Holly Hanan

*Oklahoma Career Technology Education
State Program Manager*



OKLAHOMA
CareerTech

FCS

Family and Consumer
Sciences Education



What is Family and Consumer Sciences (FCS)?

- Family and consumer sciences is a field that explores the **interconnectedness** of **family life**, **personal development**, and **community well-being**. It covers a wide range of topics, including nutrition, housing, clothing, financial management, and child development. It's a practical field that helps people develop the skills and knowledge they need to lead fulfilling and successful lives.



OKLAHOMA
STATE ASSOCIATION

**CareerTech
Student
Organization**

Our Impact

K12
Programs

372

K12
Enrollments

39,122

CAREER CLUSTER	ARTS AND AUDIO/VISUAL		EDUCATION AND TRAINING	HEALTH SCIENCES	HOSPITALITY AND TOURISM		HUMAN SERVICES			EXPLORATORY FCS	
Pathway	Visual Arts		Teaching/Training	Therapeutic Services	Restaurant and Food/ Beverage Services	Lodging Travel and Tourism Recreation Amusements and Attractions	Counseling and Mental Health Services	Early Childhood Development and Services	Family and Community Services	INVESTIGATE FCS 6th grade 9 weeksOCAS 8438 1 semesterOCAS 8439 Full yearOCAS 8412	
Program	Design Assistant	Fashion Assistant	Education Careers	Nutritional Sciences	Food Preparation	Hospitality Assistant	Counseling and Mental Health	Child Development Associate (CDA)	Work and Family Studies		
Grades 8-9 Career Exploration	FACS Basics OCAS 8415		LEAD Oklahoma OCAS 8408	FACS Basics OCAS 8415	FACS Basics OCAS 8415		FACS Basics OCAS 8415 OR Principles of Human Services OCAS 8469			TWEEN LIFE 7th grade 9 weeksOCAS 8440 1 semesterOCAS 8441 Full yearOCAS 8411	
Grades 9-12 Career Readiness	Interior Design I OCAS 8461	Fashion Design I OCAS 8413	Teaching and Learning in Elementary, Secondary and Adult Education OCAS 8459	Comprehensive Health OCAS 8479	Introduction to Hospitality and Tourism OCAS 8448		Human Growth and Development OCAS 8471				
	Interior Design II OCAS 8406	Fashion Design II OCAS 8425	Human Growth and Development OCAS 8471	Lifetime Nutrition and Wellness OCAS 8474	Introduction to Culinary Arts OCAS 8475 AND/OR Culinary Basic Skills OCAS 8426	Hospitality and Tourism Management OCAS 8478	Counseling and Mental Health OCAS 8473	ECE: Pathway to National Credential OCAS 8465	Interpersonal Studies OCAS 8470	FACS BASICS 8th grade OCAS 8415	
Personal Financial Literacy OCAS 8404 (1 semester) AND/OR Career Orientation OCAS 8414 (1 or 2 semesters)											
*** Possible Transition to Technology Center program ***											
Grades 11-12 Career Preparation	Interior Design III OCAS 8480	Fashion Design III OCAS 8477	Teach Oklahoma (includes internship) OCAS 8409	Food Science OCAS 8472	Culinary Advanced Skills OCAS 8428 (requires occupational culinary certificate)	Leadership and Management OCAS 8452	Leadership and Management OCAS 8452				ESSENTIAL HEALTH 7th and 8th grades OCAS 8481
FACS Ed Capstone OCAS 8446* AND/OR School and Community Partnership I OCAS 8419 AND/OR School and Community Partnership II OCAS 8420											
Certifications, Assessments and Badging	Interior Design Fundamentals (AAFCFS) Housing and Furnishings (AAFCFS) Interior Design I (Precision Exams) Interior Design II (Precision Exams)	Fashion, Textiles and Apparel (AAFCFS) Apparel Design and Production I (Precision Exams) Apparel Design and Production II (Precision Exams) Fashion Design Studio (Precision Exams)	Education Fundamentals (AAFCFS) Paraprofessional Certification (Praxis) Leadership Principles (Precision Exams)	eFood Handlers Nutrition Food and Wellness (AAFCFS) Nutrition and Wellness (Precision Exams) Food Safety and Science (ICEV)	eFood Handlers Basic Culinary Arts (ODCTE) Advanced Culinary (ODCTE) Culinary Arts (AAFCFS) Culinary Arts (NRA) ProStart 1 (NRA) ProStart 2 (NRA) Meat Evaluation (ICEV) Culinary Meat Selection and Cookery (ICEV) Certified Fundamentals Cook (ACF) Certified Fundamentals Pastry Cook (ACF)	Intro to Hospitality and Tourism (ODCTE) Certified Guest Service Professional (AHLA) START Front Desk Representative Certification (AHLA) Customer Service (Workforce Ready System)	ELCCT (ODCTE) Family and Community Services (AAFCFS) Leadership Principles (Precision Exams)	ELCCT (ODCTE) CDA Assessment (ODCTE) Early Childhood Education (AAFCFS) Paraprofessional Certification (Praxis) Leadership Principles (Precision Exams)	Pre-PAC Broad Field FCS (AAFCFS) Family and Community Services (AAFCFS) Leadership Principles (Precision Exams)	First Aid — Infant/Child CPR eFood Handler FACS Basics EOI	
	Can be used with multiple courses/pathways: Career Preparedness (ICEV) Employability Soft Skills (Microburst Learning) FACS Basics EOI Financial Literacy EOI Job Seeking and Retention Skills (ODCTE) National Readiness Certificate: Bronze, Silver, Gold, Platinum (ACT) Personal and Family Finance (AAFCFS) Portfolio Workplace Readiness Skills (ODCTE)										
STAR Events (Pathway-Specific)	Fashion Construction Fashion Design Interior Design		Early Childhood Education Focus on Children Nutrition and Wellness Teach and Train	Baking and Pastry Culinary Math Management Event Management Focus on Children Food Innovations Hospitality, Tourism and Recreation Meat Identification Nutrition and Wellness	Baking & Pastry Culinary Arts Culinary Math Management Event Management Food Innovations Hospitality, Tourism and Recreation Meat Identification Nutrition and Wellness Sports Nutrition	Early Childhood Education Event Management Focus on Children Nutrition and Wellness Teach and Train			LEVEL 1 Repurpose and Redesign Creed Speaking New Member Facts Professional Presentation Career Investigation NATIONAL PROGRAM RECOMMENDATIONS Power of One Community Service		
STAR Events (Any Pathway)	Career Investigation Chapter in Review (Display/Portfolio) Chapter Service Project (Display/Portfolio) Digital Stories for Change Entrepreneurship Interpersonal Communications Job Interview Leadership Parliamentary Procedure Professional Presentation Promote and Publicize FCCLA Public Policy Advocate Repurpose and Redesign Say Yes to FCS Education Sustainability Challenge										

FACSED Capstone OCAS 8446, **Teach Oklahoma** OCAS 8409, **School and Community Partnership I** OCAS 8419, **AND School and Community Partnership II** OCAS 8420 earn the school district points toward School Report Card.
 ***FACSED Capstone** OCAS 8446 requires 240 hours of career readiness or career preparation coursework in one pathway prior to enrollment.
 Students may still move into or out of any FCS classes at semester. **Personal Financial Literacy** OCAS 8404 is a one-semester course. **Career Orientation** OCAS 8414 can be one semester or a full year.

- **Exploratory FCS**

- Investigate FCS (6th grade)
- Tween Life (7th grade)
- FCS Basics (8th grade)

- **Human Services**

- Counseling and Mental Health Service
- Early Childhood Development and Services
- Family and Community Services
 - FCS Basics
 - Principles of Human Services
 - Human Growth & Development
 - Interpersonal Studies
 - ECE: Pathway to CDA
 - Counseling and Mental Health
 - Leadership and Management

HUMAN SERVICES			EXPLORATORY FCS
Counseling and Mental Health Services	Early Childhood Development and Services	Family and Community Services	INVESTIGATE FCS 6th grade 9 weeksOCAS 8438 1 semester. . . .OCAS 8439 Full yearOCAS 8412
Counseling and Mental Health	Child Development Associate (CDA)	Work and Family Studies	
FACS Basics OCAS 8415			TWEEN LIFE 7th grade 9 weeksOCAS 8440 1 semester. . . .OCAS 8441 Full yearOCAS 8411
OR Principles of Human Services OCAS 8469			
Human Growth and Development OCAS 8471			FACS BASICS 8th grade OCAS 8415
Counseling and Mental Health OCAS 8473	ECE: Pathway to National Credential OCAS 8465	Interpersonal Studies OCAS 8470	
semesters)			ESSENTIAL HEALTH 7th and 8th grades OCAS 8481
Leadership and Management OCAS 8452			
OCAS 8420			First Aid — Infant/Child CPR eFood Handler FACS Basics EOI
ELCCT (ODCTE) Family and Community Services (AAFCFS) Leadership Principles (Precision Exams)	ELCCT (ODCTE) CDA Assessment (ODCTE) Early Childhood Education (AAFCFS) Paraprofessional Certification (Praxis) Leadership Principles (Precision Exams)	Pre-PAC Broad Field FCS (AAFCFS) Family and Community Services (AAFCFS) Leadership Principles (Precision Exams)	
. . . . Job Seeking and Retention Skills (ODCTE) Workplace Readiness Skills (ODCTE)			LEVEL 1 Repurpose and Redesign Creed Speaking New Member Facts Professional Presentation Career Investigation NATIONAL PROGRAM RECOMMENDATIONS Power of One Community Service
Early Childhood Education Event Management Focus on Children Nutrition and Wellness Teach and Train			

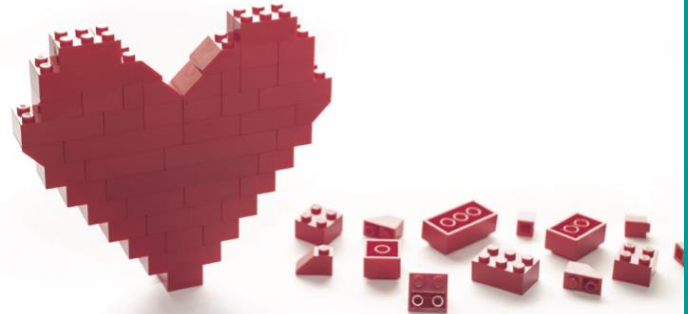
Technology Center Programs



- Early Care and Education
- Teacher Preparation



BUILDING BLOCKS FOR BETTER RELATIONSHIPS



THE DIBBLE INSTITUTE

How can FCS programs help improve healthy relationships?

FCS addresses problems concerning healthy relationships:

- Communication skills
- Conflict resolution
- Relationship dynamics
- Healthy boundaries
- Relationship maintenance
- Relationship challenges



Contact Me

Holly Hanan

FCS State Program Manager
Oklahoma Department of CareerTech

Holly.Hanan@careertech.ok.gov

It's My Community!

Camal Pennington

Executive Director

What We Do

- Use research-informed strategies to serve the most disadvantaged communities
- Connect key partners to bring transformational change
- Tackle issues of health, education, and employment to bring long-term stability
- Strengthen communities by building strong, healthy families



IMCI Youth Initiative

After School Program to encourage the formation and maintenance of two-parent families, learning to identify signs of depression and anxiety, strengthen positive engagement, reduce pregnancies outside of marriage, and improve participant's economic stability.

Local High Schools



John Marshall



Star Spencer



Fredrick Douglass

Youth Initiative Educators

Curriculum:

- Engage students in group and team activities
- Ensure curriculum fidelity
- Facilitate workshops to support students in achieving their goals
- Assist with alignment of OKCPS and IMCI culture
- Assist with students' entrance and exit of workshops



Youth Initiative Curriculum

Core Curriculum

- Love Notes
- Leadership Skills
- Financial Literacy
- Work Readiness (for work eligible ages)
- Additional Subjects:
 - Communication Skills
 - Conflict Resolution
 - Anger Management
 - Problem Solving Skills

Supports and Incentives

- Transportation
- Meals and Snacks
- \$50 for 75% Completion
- \$100 for 100% Completion
- Recreation Center Enrollment

Youth Initiative Coaches

Recruitment

- In Schools:
 - Gauging Interest
 - Assessing School Climate
 - Relationship Building
 - Introduce Workshop Topics
 - Consent and Enrollment

Assessment

- Using Hope Scale:
 - Entrance Scores
 - Exit Scores

Coaching

- Cultivating Trust and Respect:
 - Model the Qualities of a Trusted Adult
 - Discussing Home Dynamics
- Mentoring and Support:
 - Encourage Conscious Decision Making
 - Techniques for Self-Regulation

Youth Initiative Partners

Leadership Skills

- Live Free
- Willa D. Johnson Parks and Recreation
- Health Corps

Educational Advancement

- Class Matters
- Poetry and Chill
- STEM Force

Financial Literacy

- BancFirst
- Tinker Federal Credit Union



Work Readiness

- Work Ready Oklahoma
- Local Entrepreneurs
- YMCA

Health Education

- OK Council for Infectious Disease
- Guiding Right
- Health Education Network

Youth Initiative Overview



IMCI
YOUTH INITIATIVE

- Youth Program in Review
 - Program completion 75%
 - 378 hours of workshops provided
- 103 students completed workshop
 - 8% increased Hope Score
- 15 Community Partners
 - Year-1 student suspension reduced by 50% (comparing before and after workshop)

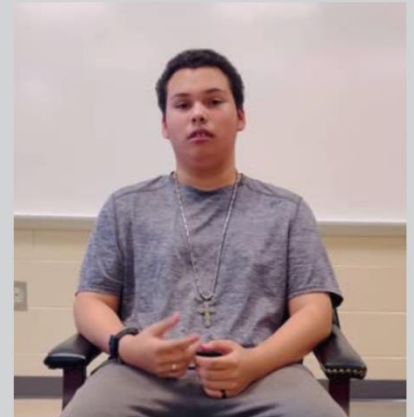
Youth Initiative Impact

Social Media

- Reinforcing Curriculum
- Recruitment

“This program really helped me to talk more, to interact more with people. I've learned a lot of things, how to make the right choices in relationships and deal with things that people go through. This program is absolutely the best thing that happened to me at this school”

-Anthony P. 16 years old





Meeting Our Children and Families Where They Are..

Maslow's Hierarchy of Needs





Familyhood

Statewide Training

SIGN UP AND STAY INFORMED

Trainings are scheduled throughout the year. To stay updated on session details as they become available, scan the QR code to register. Once registered, we'll keep you informed and ensure you're connected to participate in future training sessions.

